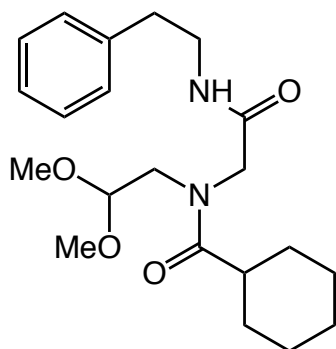


N-(2,2-dimethoxyethyl)-N-(2-oxo-2-(phenethylamino)ethyl)cyclohexanecarboxamide

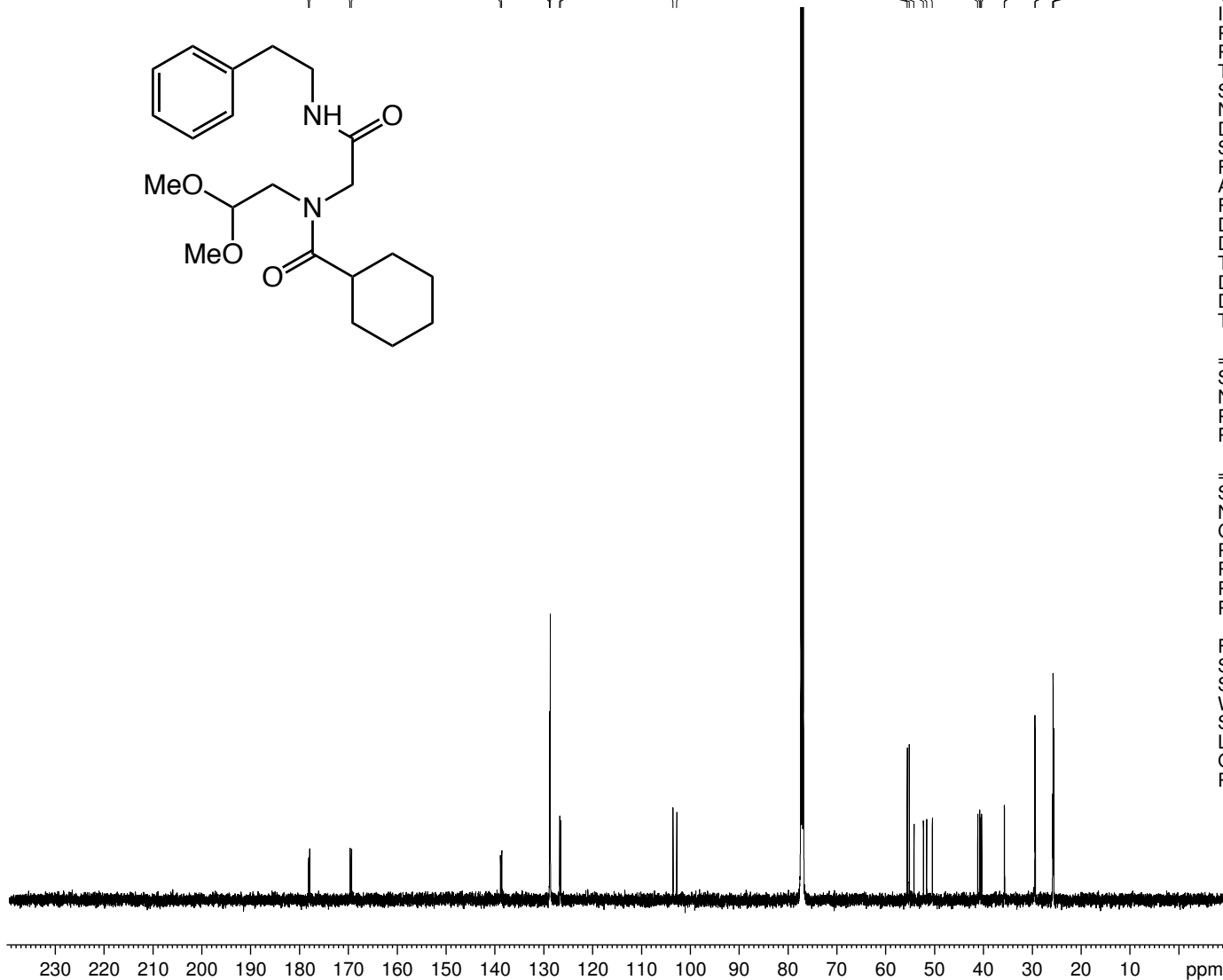


178.181
177.966
169.681
169.390

138.911
138.651
128.859
128.805
128.711
126.760
126.586

103.592
102.804

55.624
55.212
54.239
52.314
51.649
50.488
41.192
40.789
40.603
40.401
35.757
35.701
29.498
29.423
25.853
25.772
25.655



Current Data Parameters
NAME ELB-7-189p
EXPNO 10
PROCNO 1

F2 - Acquisition Parameters
Date_ 20170126
Time_ 9.02
INSTRUM av500
PROBHD 5 mm DCH 13C-1
PULPROG zgpg30
TD 65536
SOLVENT CDCl3
NS 77
DS 2
SWH 31250.000 Hz
FIDRES 0.476837 Hz
AQ 1.0485760 sec
RG 204.54
DW 16.000 usec
DE 18.00 usec
TE 298.0 K
D1 2.00000000 sec
D11 0.03000000 sec
TD0 1

==== CHANNEL f1 =====
SFO1 125.7722511 MHz
NUC1 13C
P1 9.63 usec
PLW1 23.00000000 W

==== CHANNEL f2 =====
SFO2 500.1330008 MHz
NUC2 1H
CPDPRG[2] waltz16
PCPD2 80.00 usec
PLW2 13.50000000 W
PLW12 0.21094000 W
PLW13 0.13500001 W

F2 - Processing parameters
SI 131072
SF 125.7577737 MHz
WDW EM
SSB 0
LB 1.00 Hz
GB 0
PC 1.40